

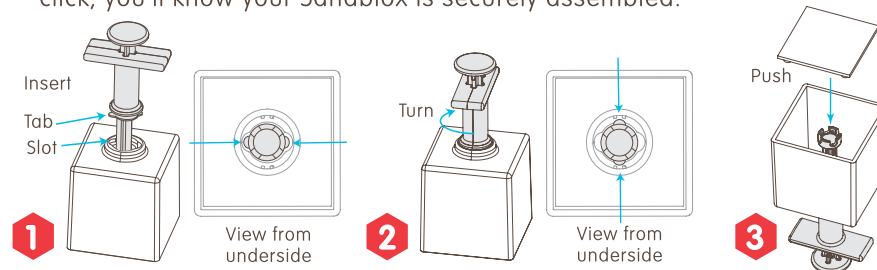


# Sandblox

## PLAY INSTRUCTIONS

### FIRST, ASSEMBLE YOUR SANDBLOX

1. Insert the plunger through the top of the mold by lining up the slots in the mold with the tabs on the plunger.
2. Turn the plunger clockwise until you feel a click. Make sure the tabs on the plunger rest between the ribs on the underside of the mold. (See image below.)
3. Turn mold upside down and drop in the matching plate, making sure the flat side faces up. Push down on the plate. When you feel the plunger click, you'll know your Sandblox is securely assembled.



### NOW YOU'RE READY TO CREATE

1. Use Sandblox at the beach, in a sandbox, or with moldable sand. If necessary, add enough water to make sand damp, but not too wet; it should clump together.
2. Fill Sandblox with sand, making sure to press it securely into all the corners. Pack it tightly with your fingers or the end of the trowel; the tighter you pack it, the better formed and more stable your blocks will be. Experiment to see which angle of the trowel end works best for packing.
3. Once the Sandblox is filled, flatten the sand by scraping off the excess with your trowel.
4. Position your block appropriately and place two fingers under the plunger handle, with your thumb on top.
5. Push the plunger as you raise the Sandblox to release the block.

Have a question or need help? Give us a call! 1-800-284-3948

Item #8260

We care about your comments. Please call us!

Melissa & Doug  
1-800-284-3948  
www.MelissaAndDoug.com

Melissa & Doug products meet or exceed U.S. testing standards and pass our high quality requirements.

© Melissa & Doug, LLC, P.O. Box 590, Westport, CT 06881

MADE IN CHINA

## HELPFUL TIPS

- For coarser or crumbly sand, be sure to pull the plunger handle up to release the mold from the completed block. Apply only light pressure with your thumb while lifting evenly.
- Depending on what kind of sand you're using, you may need more or less water; experiment until you find the texture that works best!
- To position completed blocks perfectly, gently nudge them into place with the side of the mold.
- If your shape is not holding together, try placing the filled and packed mold on its side first, then rotating it upward.
- To remove any sticky sand, give the mold a shake. Occasionally you'll want to thoroughly clean your Sandblox; just reverse the assembly steps until all components are separated (you'll have to pull firmly to release the plate), then rinse them in clear water, dry, and reassemble.

## EXTENSION ACTIVITIES

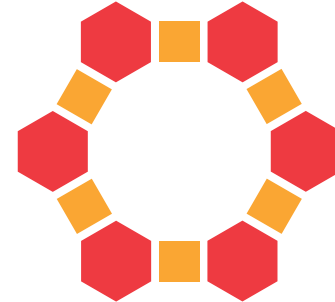
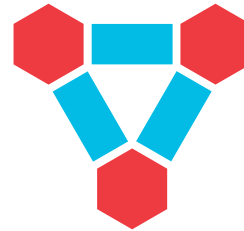
- Build a sequence of shapes (e.g. diamond, triangle, hexagon) and show it to the child, then ask him or her to recreate it. Add more shapes for more complex sequences.
- Challenge the child to make shapes out of other shapes! Can he or she form a diamond out of two triangles, a rectangle out of two squares, or a hexagon out of three diamonds?
- Play Sandblox tic-tac-toe (2 players): Using the trowel, create a large grid in the sand. Both players select a mold, taking turns making and playing their Sandblox shapes until one player gets three in a row—horizontally, vertically, or diagonally—to win!
- See who can build the highest tower using only one Sandblox shape. What shape stacks highest without toppling? Ask the child the reason why! (Larger shapes are usually more stable than smaller ones when stacked.)

## WHAT CAN YOU CREATE WITH SANDBLOX?

The possibilities are infinite! Here are some fun ideas to try.  
Be creative—there are always more patterns to discover.

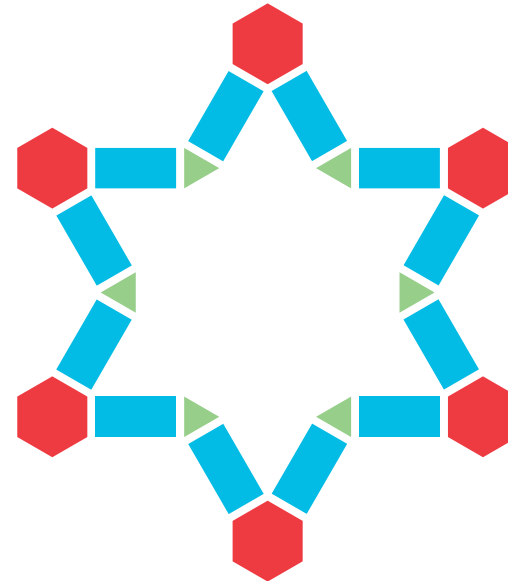
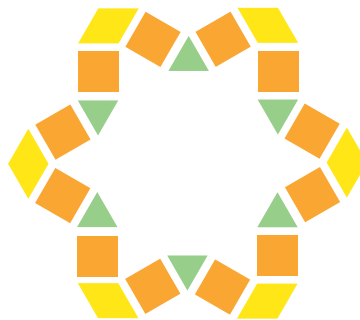
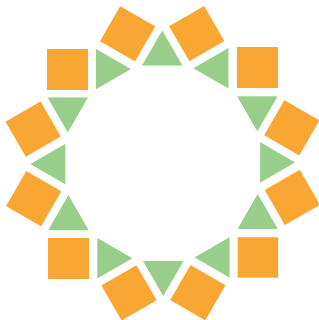
Following a pattern can help you plan before you start building. These geometric patterns are all formed by combining completed blocks to form larger shapes.

### GEOMETRIC PATTERNS



You can make simple geometric patterns  
(a flower, a star) with a single shape.

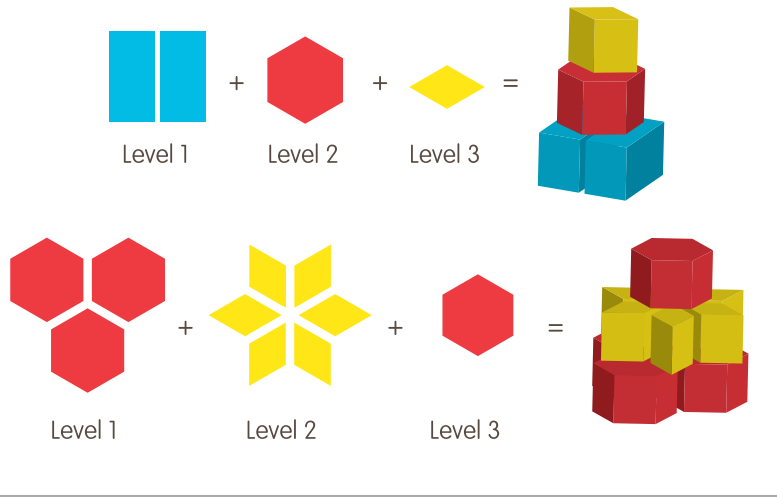
Complex geometric patterns use two shapes (or more).



Once you've got the hang of it, try making one of these advanced geometric patterns.

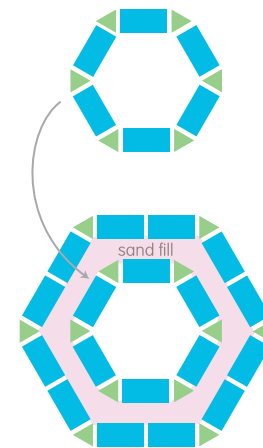
TOWERS

When building towers or pyramids, support the weight of your structure by making the base wider than the top. (These work best with moldable sand.)  
Add one layer at a time so your tower doesn't fall over!

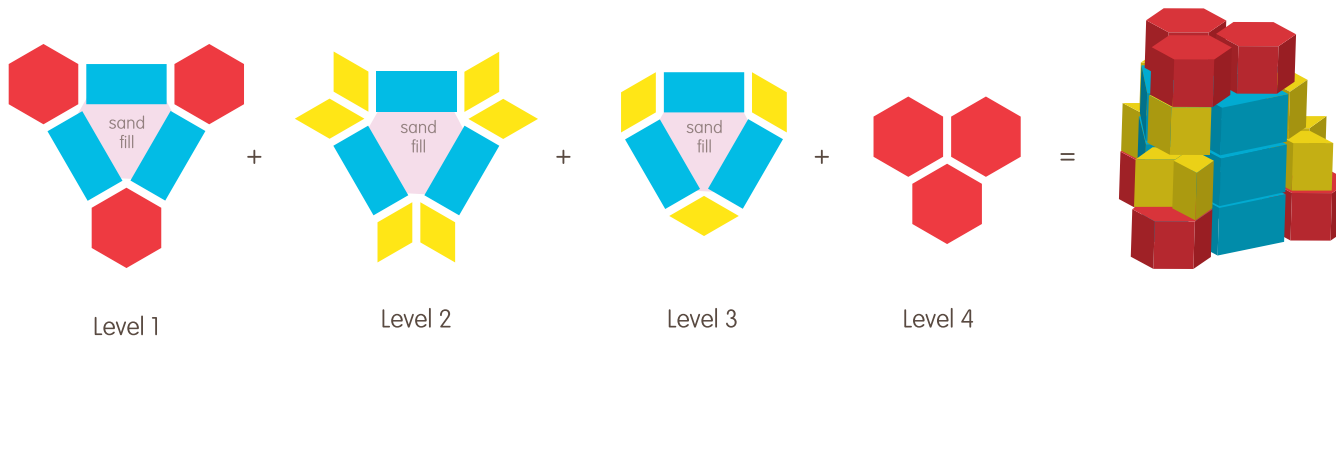


Low pyramids are very sturdy.

You can build a hollow tower or a sand-filled wall by surrounding a pattern with a slightly larger version, then filling in the gap with sand.



Walls can be one or many blocks thick.



Tall towers are an exciting challenge!